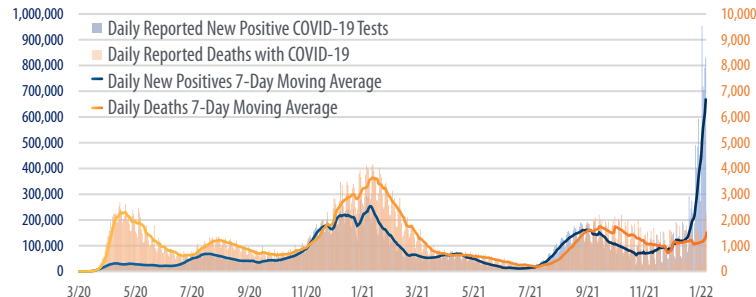


First Trust COVID-19 TRACKER

Daily Reported New Positive COVID-19 Tests vs. Daily Reported Deaths from COVID-19 in the U.S.

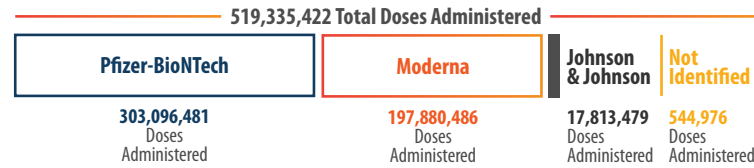
March 1, 2020 - January 7, 2022



Sources: CDC.gov, First Trust Advisors

U.S. COVID-19 Vaccine Doses Administered by Vaccine Type

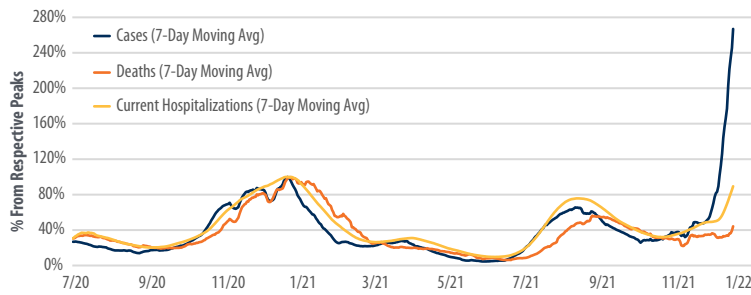
As of January 9, 2022



Sources: CDC.gov, First Trust Advisors

U.S. COVID-19 Cases, Deaths and Total Hospitalizations as a Percent (%) of their January 2021 Peaks

July 21, 2020 - January 7, 2022

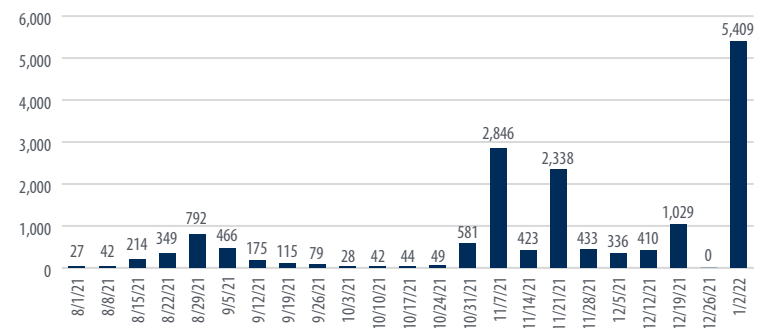


Sources: CDC.gov, First Trust Advisors

A new study led by Imperial College London researchers found that **high levels of pre-existing T cells, created by the body when infected with other human coronaviruses like the common cold, can protect against COVID-19 infection.**¹

U.S. K-12 COVID-19 Related Public School Disruptions by Start Week

August 1, 2021 - January 2, 2022



Sources: Burbio School Tracker, First Trust Advisors

U.S. COVID-19 Case Fatality Rate

September 1, 2020 - January 7, 2022

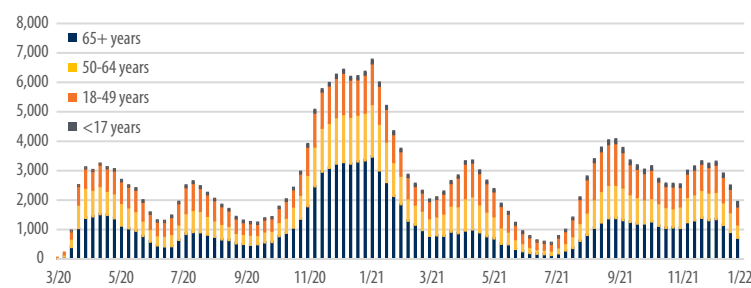


Sources: CDC.gov, First Trust Advisors. Case fatality rate is calculated as the ratio between the 7-day average number of deaths and the 7-day average number of cases 10 days earlier.

A CDC study of 915 adolescent patients hospitalized with COVID-19 found 83% and 88% of patients aged 5–11 and 12–17 years, respectively, had one or more underlying medical conditions, and approximately two thirds of patients hospitalized for COVID-19 aged 12–17 years were obese.²

New Daily U.S. Hospitalizations with COVID-19 by Age

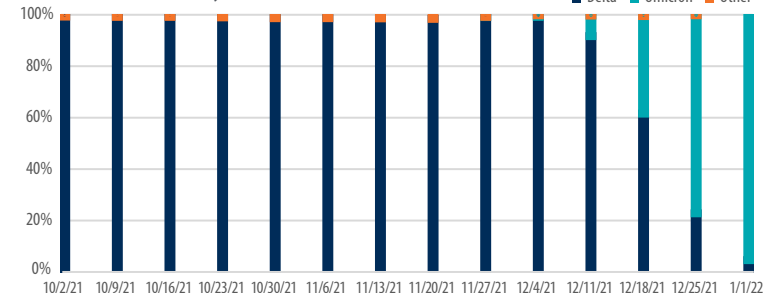
March 7, 2020 - January 1, 2022



Sources: CDC.gov, First Trust Advisors

U.S. COVID-19 Variant Proportions

October 2, 2021 - January 1, 2022



Sources: CDC.gov, First Trust Advisors

¹imperial.ac.uk (January 10, 2022); ²CDC.gov (December 31, 2021)